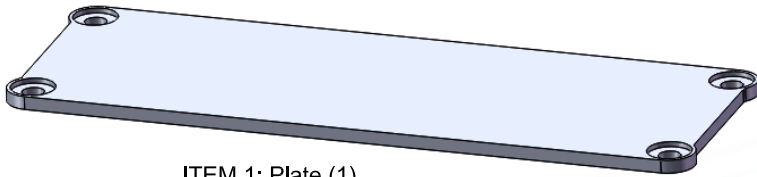
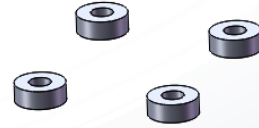




## KAA0614 \_ NAMEPLATE KIT - KNG-MXXX



ITEM 1: Plate (1)



ITEM 2: Spacers (4)



ITEM 3: Screws (4)

## INSTALLATION INSTRUCTIONS

FIGURE 1



FIGURE 2



STEP 1: Using phillips screw driver, remove and discard four screws located on the top-front section of the KNG-MXXX unit.

STEP 2: Place each of the four spacers included in the kit in the cavities where the four screws were removed, with the spacer holes lined up with the threaded holes on the KNG-MXXX unit.

STEP 3: Lay the plate on top of the spacers with its holes lined-up with the holes of the spacers.

STEP 4: Fasten Item 3 screws to capture both the plate and the spacers using phillips screw driver to a torque of 5 in-lbs.

FIGURE 2 shows a completely installed Nameplate Kit.

7005-30965-600 Rev-B