

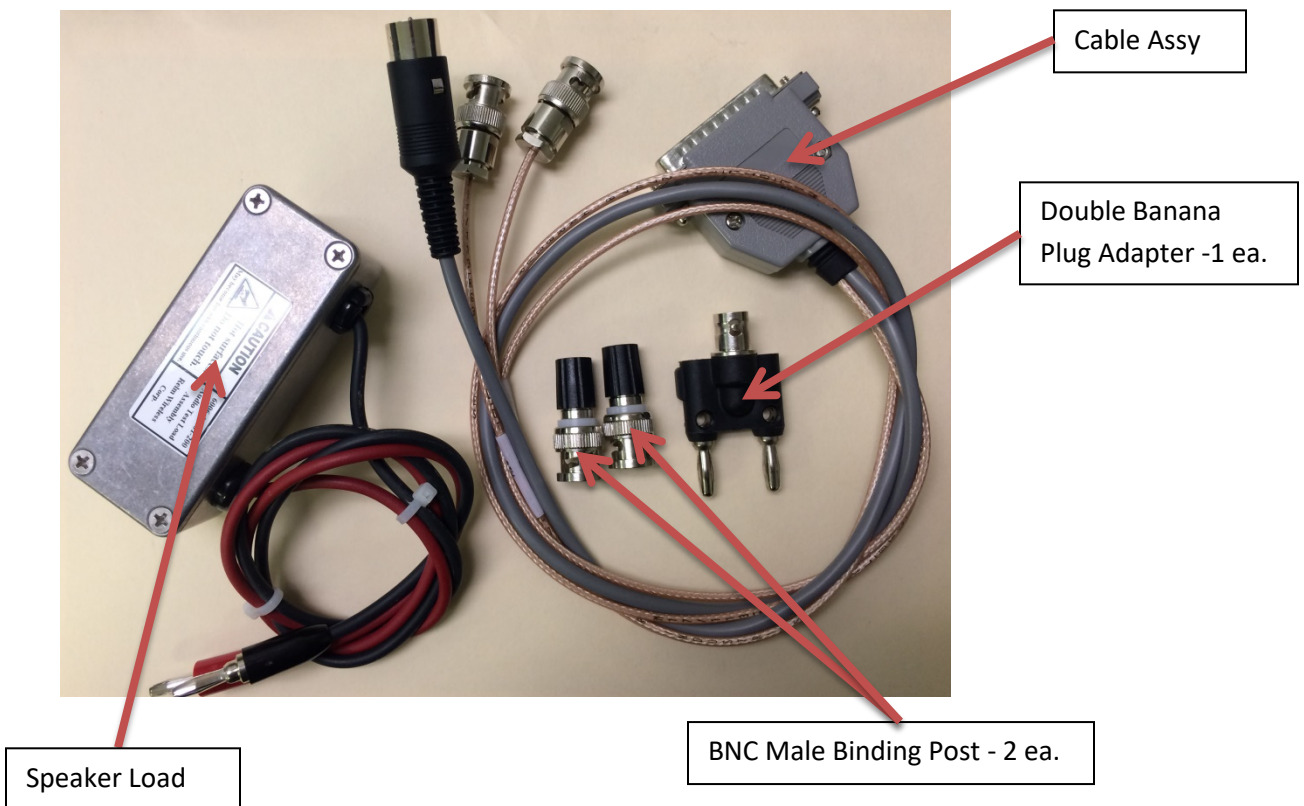
KAA0609A

User Guide

A. General

The KAA0609A is a cable assembly used for testing KNG-M series radios. This cable is compatible with Cobham/Aeroflex 3920 only. If using HP8920, please use KAA0609.

B. The Kit



C. Set-Up

1. Turn on the Aeroflex 3920.
2. Highlight “BK KNG Autotest”, then press “SELECT” as shown in Figure 2.

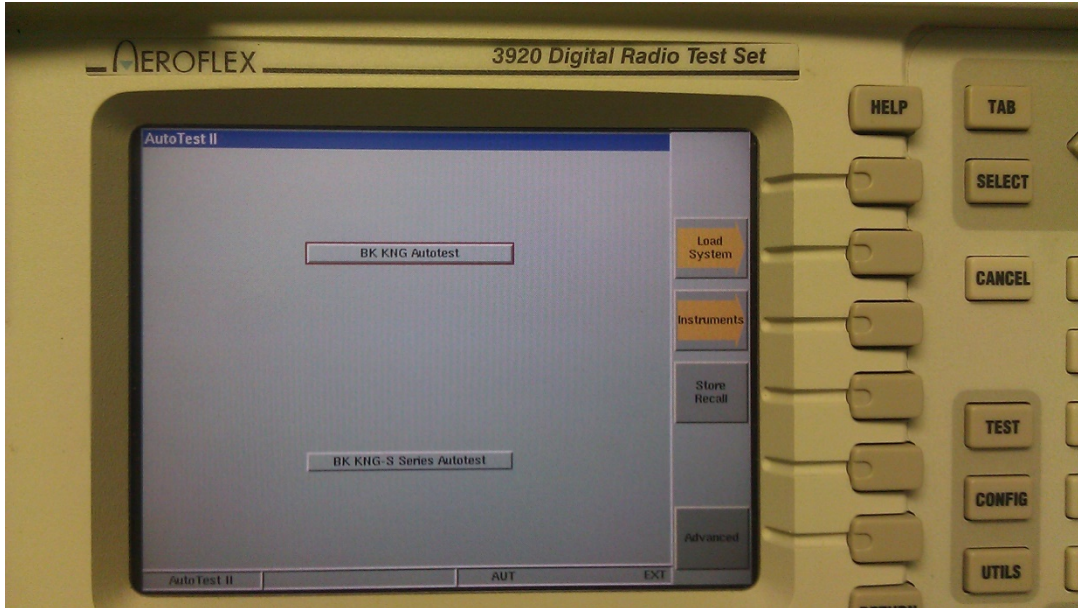


Figure 2

3. The test script will load up.
4. Radio IP box should have “10.250.46.5” if not enter this IP as shown in Figure 3.

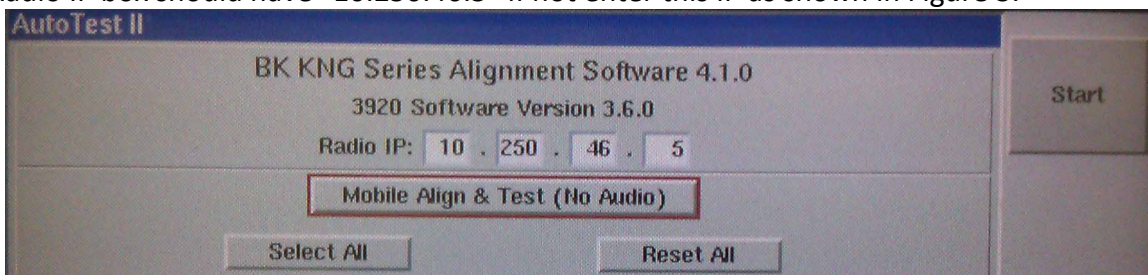


Figure 3

5. Highlight the field just below IP Address box.
6. Press “Select” then a menu will show up as shown in Figure 4.

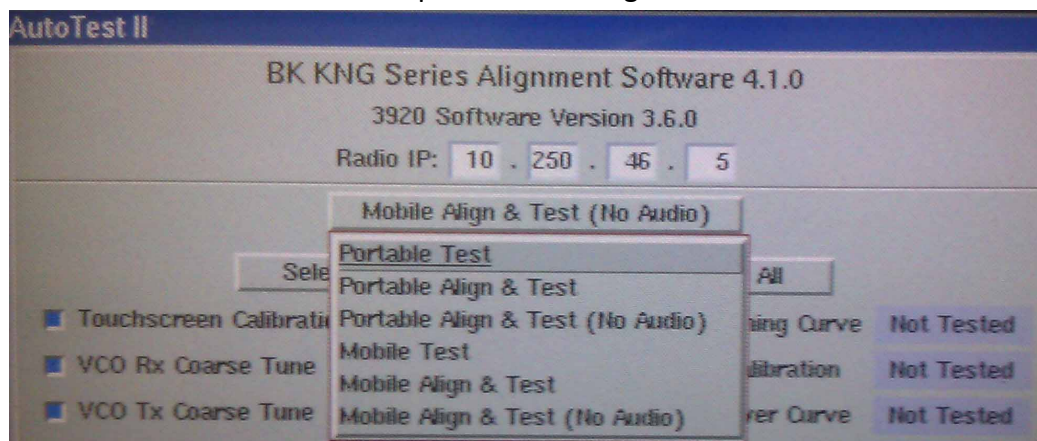


Figure 4

7. Choose the type of test for the radio under test.
8. Press “Select”.

D. Connections:

1. Connect the “Mic” BNC to “FUNCTION GEN/DEMOD OUT” port of the Aeroflex 3920.
2. Connect the Accessory Plug (DIN) into the “MIC/ACC” port of the Aeroflex 3920 as shown in Figure 5.



Figure 5

3. Connect the two “Banana to BNC” binding post to Audio In 1 and 2 as shown in Figure 6.



Figure 6

4. Connect “Double Banana to BNC” to “Audio In” binding posts on the Aeroflex 3920 as shown in Figure 7 below.



Figure 7

5. Plug in the 4Ω load to the “Double Banana to BNC” adapter as shown in Figure 8.



Figure 8

6. Connect “Audio ” BNC to “Audio In” (Double Banana to BNC adapter) connected to Aeroflex 3920 “Audio In”.
7. Connect RF Coax Cable to “T/R” port of the Aeroflex 3920 and to the radio RF antenna out as shown in Figure 5.

Note: If testing KNG M150, a 6db attenuator is needed in between the radio under test and Aeroflex 3920.

8. Connect the USB Cable to USB port on Aeroflex 3920 and Mini-USB side to the USB port on the radio front panel as shown in Figure 5.

E. Operation:

1. Select Test Type
 - 1.1. From the pull-down, select “Mobile Test”, “Mobile Align & Test”, or “Mobile Test (No Audio) “Mobile Align & Test (No Audio)””.
2. Full Align and Test.
 - 2.1. To perform the full alignment and test, highlight “Select All” and all the alignment items will be selected as shown in Figure 9.



Figure 9

- 2.2. Press the button corresponding to “START” to begin the alignment.
3. Individual Testing
 - 3.1. If individual testing is desired, then highlight “RESET ALL” then highlight the individual test items to run.
 - 3.2. Press “START”.

Technical Service Support - Customer Service

BK Technologies
7100 Technology Drive
Melbourne, FL 23904
(800) 422-6281
www.BKTechnologies.com