

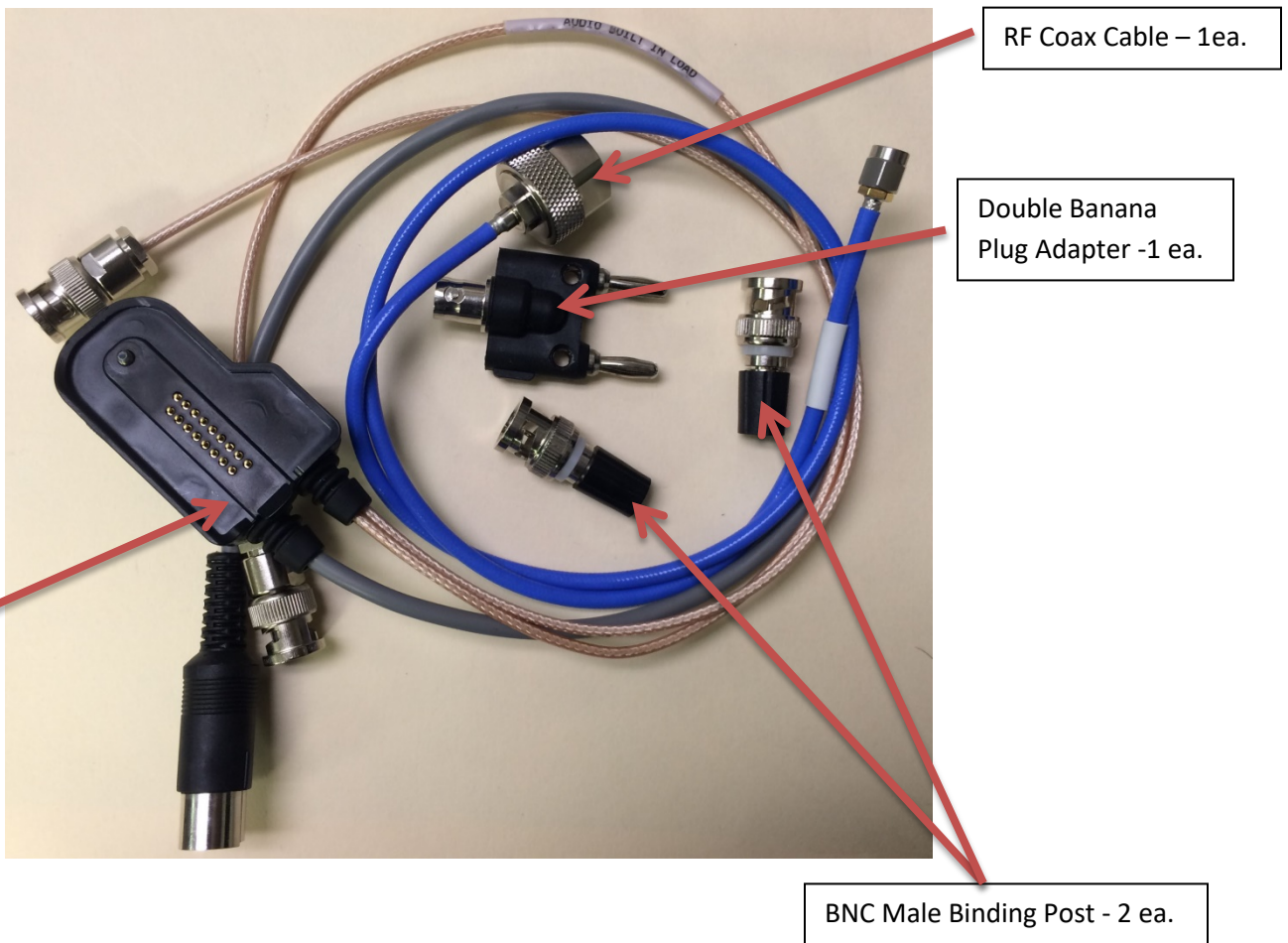
# KAA0608A

## User Guide

### A. General

The KAA0608A is a cable assembly used for testing KNG-P/KNG-Ps series radios. This cable is compatible with Cobham/Aeroflex 3920 only. If using HP8920, please use KAA0608.

### B. The Kit



### C. Set-Up

1. Turn on the Aeroflex 3920.
2. Highlight "BK KNG Autotest", then press "SELECT" as shown in Figure 2.

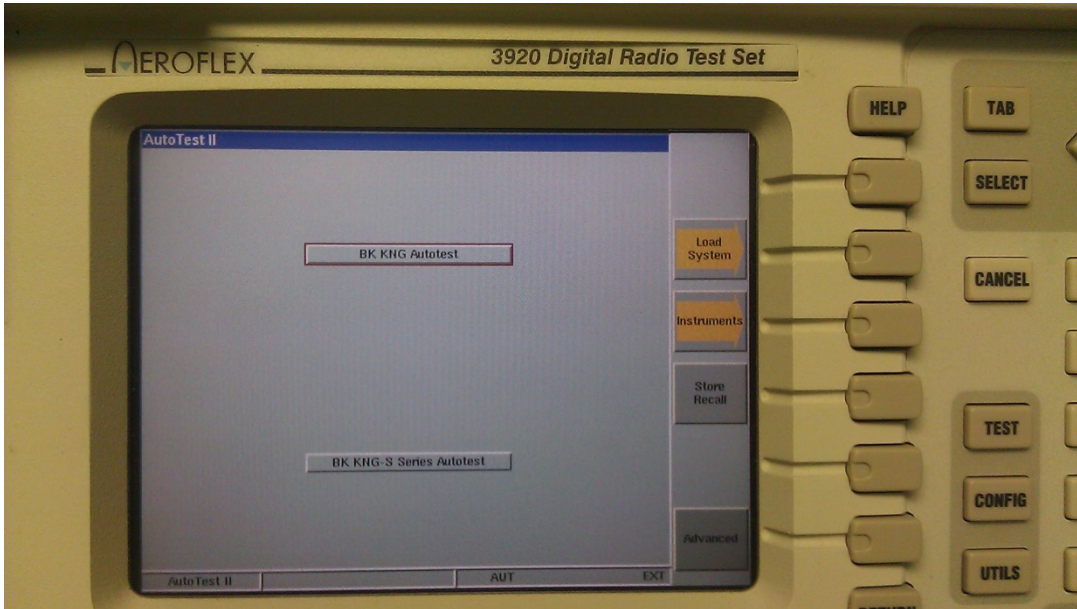


Figure 2

3. The test script will load up.
4. Radio IP box should have "10.250.46.5" if not enter this IP as shown in Figure 3.

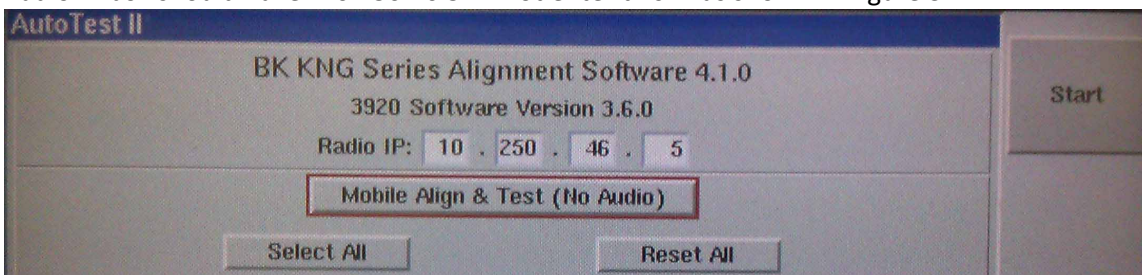


Figure 3

5. Highlight the field just below IP Address box.
6. Press "Select" then a menu will show up as shown in Figure 4.

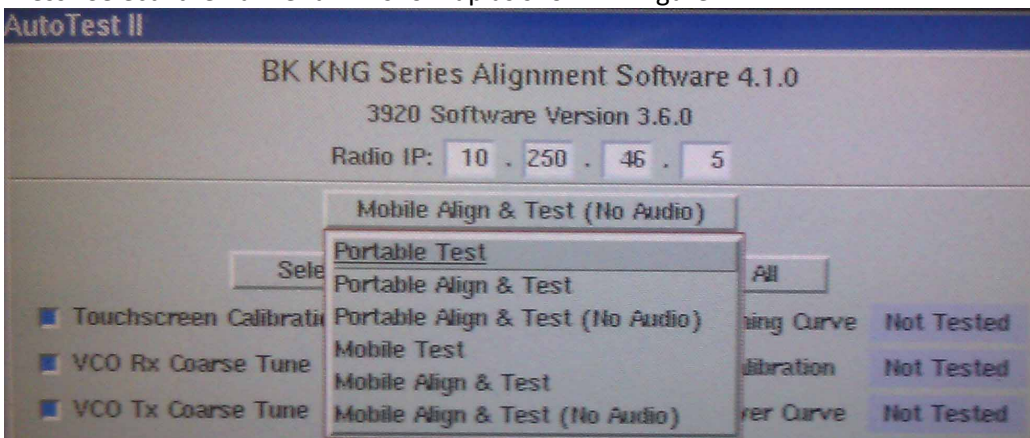


Figure 4

7. Choose the type of test for the radio under test.
8. Press "Select".

**D. Connections:**

1. Connect the “Mic” BNC to “FUNCTION GEN/DEMOD OUT” port of the Aeroflex 3920.
2. Connect the Accessory Plug (DIN) into the “MIC/ACC” port of the Aeroflex 3920 as shown in Figure 5.



Figure 5

3. Connect the two “Banana to BNC” binding post to Audio In 1 and 2 as shown in Figure 6.



Figure 6

4. Connect “Double Banana to BNC” to “Audio In” binding posts on the Aeroflex 3920 as shown in Figure 7.



Figure 7

5. Connect the Audio/Speaker out coax from the test kit to the “Double Banana to BNC” adapter connected to Aeroflex 3920 “Audio In” as shown in Figure 8.



Figure 8

6. Connect RF Coax Cable to “T/R” port of the Aeroflex 3920 and to the radio RF antenna out as shown in Figure 5.
7. Connect the USB Cable to Aeroflex 3920 USB port (see Fig. 5) and the side connector USB.

#### E. Operation:

1. Select Test Type
  - 1.1. From the pull-down, select “Portable Test”, “Portable Align & Test”, “Portable Test (No Audio)” or “Portable Align & Test (No Audio)”.
2. Full Align and Test.
  - 2.1. To perform the full alignment and test, highlight “Select All” and all the alignment items will be selected as shown in Figure 9.

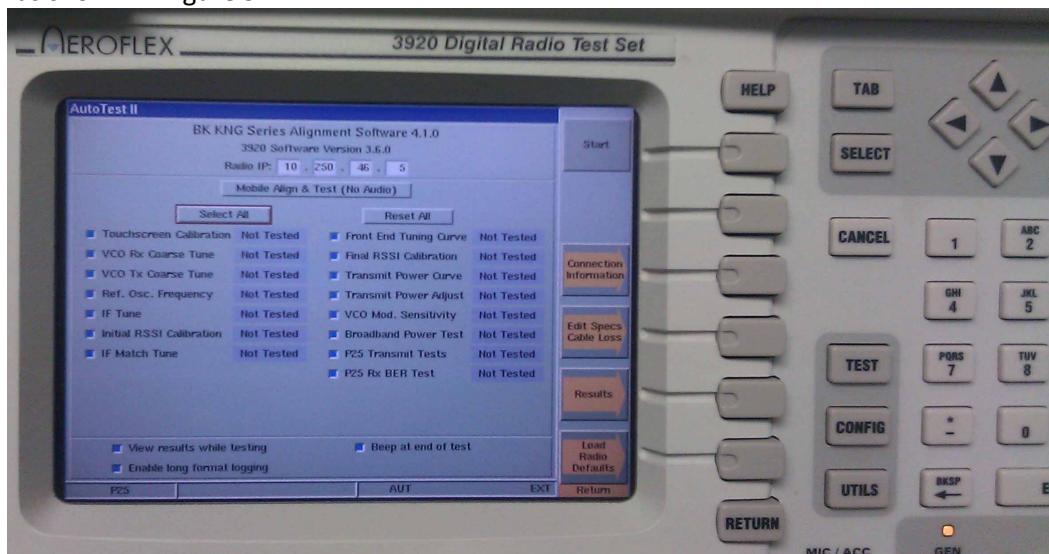


Figure 9

- 2.2. Press the button corresponding to “START” to begin the alignment.
3. Individual Testing.
  - 3.1. If individual testing is desired, then highlight “RESET ALL” then highlight the individual test items to run.
  - 3.2. Press “START”.

## **Technical Service Support - Customer Service**

BK Technologies  
7100 Technology Drive  
Melbourne, FL 32904  
(800) 422-6281  
[www.BKTechnologies.com](http://www.BKTechnologies.com)